

Formaldehyde

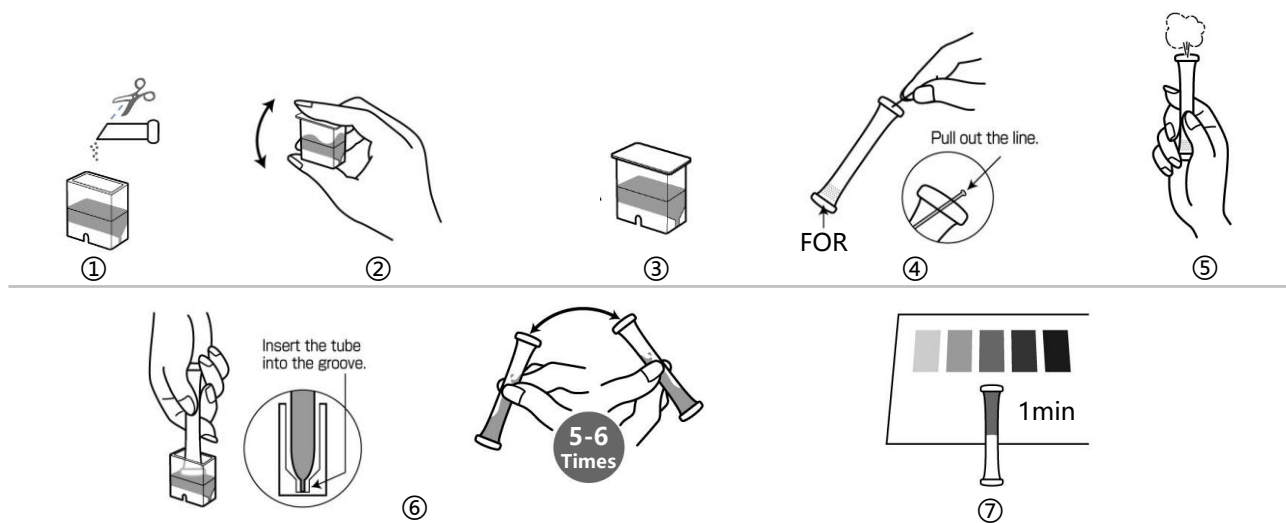
MBTH Visual Colorimetric Method

Model: WAK-FOR

Main Reagent: 3-Methyl-2-benzothiazolinonehydrazone Hydrochloride (MBTH)

Measuring Range: 0 - 2 mg/L (ppm)

How to Use



- ① Take sample into Cell (PACKTEST Square Cup) up to line (1.5mL) and add K-1 Reagent (small tube).
- ② Close the cap and shake the Cell for 5 to 6 times to dissolve reagent.
- ③ Leave it stand for 3 min.
- ④ Remove the colored line at the top of the tube to clear the aperture.
- ⑤ Press the tube's side wall to expel the air and hold the tube.
- ⑥ Immerse the aperture of the tube into the Cell, pressing it against the bottom, and release finger to take all the sample from the Cell into the tube. Invert the tube back and forth lightly for 5 to 6 times.
- ⑦ After 1min, compare the actual color in the tube with Standard Color.

How to Read the Result

After the reaction time, compare the color of the tube with Standard Color. The nearest color indicates the concentration value of the analyte in your sample. A color between two standard colors indicate the value between them.

Handling of PACKTEST Before and After Use

First Aid

Eye Contact → Immediately flush eyes with plenty of water.

Skin/Cloth Contact → Immediately flush contacted area with water.

Ingestion → Immediately rinse mouth.

If swallowed the content or any symptom appears, seek medical advice immediately.
Please refer to SDS for further information.

Storage

Use PACKTEST tubes as soon as possible after opening the laminated package.

Disposal

For business use, please follow in the manner consistent with relevant laws and regulations.
Otherwise, the tube can be disposed as combustible waste.

PACKTEST Formaldehyde

Caution

1. The optimum pH upon reaction will be around 3. If the pH of the sample exceeds 5-8, please neutralize with dilute sodium hydroxide solution or dilute sulfuric acid prior to measurement.
2. A formaldehyde standard solution of 1000mg/L produces a color equivalent to or greater than 2 on the Standard Color, but 2000mg/L produces a color 0.2 to 0.5 and 5000mg/L produces a color of 0.1. If high concentration is expected, dilute in advance before measurement.
3. Keep the sample temperature between 15-40°C. If the sample temperature is low, it requires longer reaction time.
4. Ensure that the PACKTEST tube is filled up to half.
5. Partially undissolved reagent will not affect the measurement.
6. When comparing to the Standard Color, please be sure to read under the daylight. It may be difficult to determine the color under the direct sunlight, certain florescent lights, mercury lamp or LED.
7. You can put the line back into the aperture to seal. This will avoid possibility of spilling the content of the tube.

Interference

Standard Color is prepared based on the standard solution. If there are some coexisting substances that may cause interference, please compare the result with official method or standard addition method for verification. Below is the list of interference data for on color development when adding each of the single substances to the standard solution.

≤1000mg/L	will not affect	... B(III), Ba ²⁺ , Ca ²⁺ , Cl ⁻ , I ⁻ , K ⁺ , Mg ²⁺ , Mn ²⁺ , Mo(VI), Na ⁺ , NH ₄ ⁺ , NO ₃ ⁻ , SO ₄ ²⁻ , Zn ²⁺
≤500mg/L	"	... Co ²⁺
≤100mg/L	"	... Al ³⁺ , F ⁻ , PO ₄ ³⁻
≤50mg/L	"	... Phenol
≤20mg/L	"	... Anionic Surfactant, Residual Choline
≤10mg/L	"	... Cr ³⁺ , Cr(VI), Cu ²⁺ , Fe ²⁺ , Fe ³⁺ , Ni ²⁺ , NO ₂ ⁻
≤1mg/L	"	... CN ⁻

Seawater does not affect the result.

Oxidizing substances and Reducing substances can interfere with measurement.

【Caution】

- This product is made for analyzing water quality purpose only. Do not use for any other purpose.
 - This product contains small amount of chemicals. Please read instruction manual, GHS labels, SDS, and other necessary document thoroughly prior to use.
 - Please keep this information handy for future reference.
- <Safety>
- Please wash your hands thoroughly before and after the test. Do not inhale the chemical reagents.
 - It is highly recommended to wear protective gloves, eye protection, and mask upon using this product.
 - Avoid release chemical reagents or waste solution to the environment.
- <Storage>
- Please keep this product out of reach of children. Keep it in the dry and dark place at room temperature.
- <Other>
- Please check the expiration date shown on the box, and make sure to use within the date.
 - Specifications are subject to change without notice.



KYORITSU
CHEMICAL-CHECK Lab., Corp.

1-18-2 Hakusan, Midori-ku, Yokohama, Kanagawa
226-0006, JAPAN E-mail:eng@kyoritsu-lab.co.jp

2102