

KYORITSU PACKTEST INSTRUCTIONS

PMD

(Potassium Permanganate Consumption)

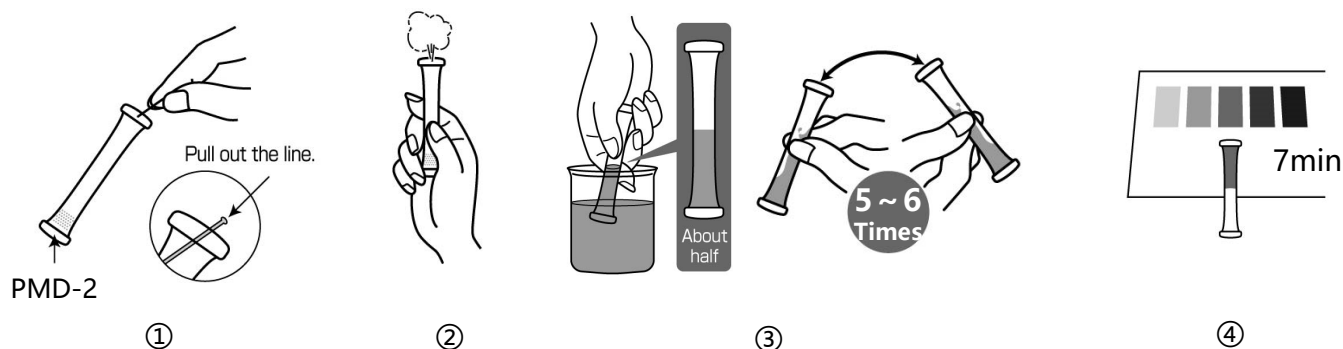
Model: WAK-PMD-2

Oxidation with Potassium Permanganate in Alkalinity and Visual Colorimetric Method

Main Reagent: Potassium Permanganate

Measuring Range: KMnO_4 0 - 15 mg/L (ppm)

How to Use



- ① Remove the colored line at the top of the tube to clear the aperture.
- ② Press the tube's side wall to expel air and hold the tube.
- ③ Immerse the aperture of the tube into the sample, release the finger to fill up the tube halfway. Invert the tube back and forth lightly for 5-6 times.
- ④ After 7min, place the tube on the provided Color Sheet as shown to compare the color when sample temperature is at 20°C (invert the tube 1 to 2 times halfway through).

How to Read the Result

After the reaction time, compare the color of the tube with Standard Color. The nearest color indicates the concentration value of the analyte in your sample. A color between two standard colors indicate the value between them.

Handling of PACKTEST Before and After Use

The content of the tube is **Strong Alkali**. Hazardous when contacting with eyes.

First Aid

Eye Contact → Immediately flush eyes with water for at least 15 minutes, followed by consult with Ophthalmologist, even without any symptom.

Skin/Cloth Contact → Immediately flush contacted area with water.

Ingestion → Immediately rinse mouth.

If swallowed the content or any symptom appears, seek medical advice immediately. Please refer to SDS for further information.

Storage

Keep unused PACKTEST tubes in the provided preserving bag after opening the laminated package and use them as soon as possible. Depending on the storage condition, the reagent may deteriorate in several days especially under the hot and humid weather.

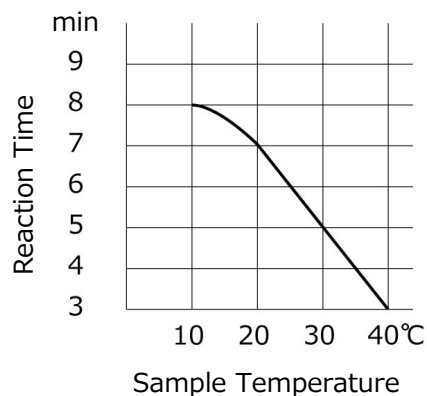
Disposal

For business use, please follow in the manner consistent with relevant laws and regulations. Otherwise, the tube can be disposed as combustible waste.

PACKTEST Potassium Permanganate Consumption

Caution

1. Keep the sample temperature at 20°C. If the sample temperature is different, determine the reaction time from the graph on the right. After the specified time passes, the value will be higher.
2. The optimum pH upon reaction will be around 13. If the pH of the sample will be less than 5, please adjust pH 7 or higher with diluted sodium hydroxide solution prior to measurement.
3. Ensure that the PACKTEST tube is filled up to half.
Larger or smaller sample volume will imply higher or lower value, respectively.
4. When comparing to the Standard Color, please be sure to read under the daylight. It may be difficult to determine the color under the direct sunlight, certain florescent lights, mercury lamp or LED.
5. You can put the line back into the aperture to seal. This will avoid possibility of spilling the content of the tube.



【Caution】

- This product is made for analyzing water quality purpose only. Do not use for any other purpose.
 - This product contains small amount of chemicals. Please read instruction manual, GHS labels, SDS, and other necessary document thoroughly prior to use.
 - Please keep this information handy for future reference.
- <Safety>
- Please wash your hands thoroughly before and after the test. Do not inhale the chemical reagents.
 - It is highly recommended to wear protective gloves, eye protection, and mask upon using this product.
 - Avoid release chemical reagents or waste solution to the environment.
- <Storage>
- Please keep this product out of reach of children. Keep it in the dry and dark place at room temperature.
- <Other>
- Please check the expiration date shown on the box, and make sure to use within the date.
 - Specifications are subject to change without notice.



KYORITSU
CHEMICAL-CHECK Lab., Corp.

1-18-2 Hakusan, Midori-ku, Yokohama, Kanagawa
226-0006, JAPAN E-mail:eng@kyoritsu-lab.co.jp

2102